

Saudi Standards, Metrology and Quality Organization (SASO)

Technical Regulation for Escalators and Moving Walkways

This Technical Regulation was adopted at the meeting of the Board of Directors of the Authority No. (184) on 28/08/1443 A.H., corresponding to 31/03/2022 A.D.

The regulation was published in the Official Gazette on
19/10/1443 A.H. corresponding to 20/05/2022 A.D.

Version 1

Note:

Only the Arabic version of this Regulation is authentic in law and is applicable where there are differences with this translation



Contents

Preamble	3
Article (1) Terms and definitions	5
Article (2) Scope.....	8
Article (3) Objectives	8
Article (4) Obligations of Supplier.....	8
Article (5) Obligations of Operating Entity	14
Article (6) Obligations of Maintenance Entity.....	14
Article (7) Obligations of Inspection Body.....	15
Article (8) Labelling	15
Article (9) Conformity Assessment Procedures.....	15
Article (10) Responsibilities of Regulatory Authorities	16
Article (11) Responsibilities of Market Surveillance Authorities	16
Article (12) Violations and Penalties	17
Article (13) General Provisions.....	18
Article (14) Transitional Provisions	19
Article (15) Publication	19
Annex (1-A) List of Relevant Standards.....	20
Annex (1-B)List of Products and Customs Coding	22
Annex (2) Conformity Assessment Form (Type 1a) as per ISO/IEC 17067	23
Annex (3) Supplier Declaration of Conformity	27



Preamble

In line with the accession of the Kingdom of Saudi Arabia (KSA) to the World Trade Organization (WTO), as per the Decree No. 244 of the Council of Ministers, dated 21/09/1426 A.H., concerning the approval of documentation on the Kingdom's accession to the WTO, and the requirements by which the KSA shall adapt its relevant systems with the principles of WTO agreements, particularly, the Technical Barriers to Trade (TBT), which stipulates that no unnecessary technical requirements shall impede the flow of commodities among the member states, and that technical requirements and methods of conformity assessment shall not discriminate between products on the basis of origin, through the issuance of Technical Regulations that include the essential requirements and standardized business procedures.

In accordance with Article 3 (Clause-1), Statue of Saudi Standards, Metrology and Quality Organization, issued in accordance with the Council of Ministers Decree No. 216, dated 17/06/1431 A.H. (31/05/2010 A.D.), stipulating that: **“SASO shall issue Saudi standards, quality systems and guidelines and conformity assessment, compatible with international standards and guidelines, that meet the requirements of the World Trade Organization (WTO) Agreement, in addition to their compliance with Islamic Sharia and serving the interests of Saudi Arabia”;**

In accordance with Article 4 (Clause-2), Statue of Saudi Standards, Metrology and Quality Organization, issued in accordance with the Council of Ministers Decree No. 216, dated 17/06/1431 A.H. (31/05/2010 A.D.), stipulating that: **“SASO shall issue regulations for conformity assessment procedures of goods, products, and services according to approved standards”.**

In accordance with Article 4 (Clause-14), Statue of Saudi Standards, Metrology and Quality Organization, issued in accordance with the Council of Ministers Decree No. 216, dated 17/06/1431 A.H. (31/05/2010 A.D.), stipulating that: **“SASO shall review the laws and control regulations related to SASO's work fields, and develop them, and propose amendments thereto in line with quality and safety requirements, and refer them to competent bodies in order to review and issue them, in accordance with applicable procedures”.**

In accordance with Article 6 (Clause-1), Statue of Saudi Standards, Metrology and Quality Organization, issued in accordance with the Council of Ministers Decree No. 216, dated 17/06/1431 A.H. (31/05/2010 A.D.), stipulating that: **“Subject to Article 4 of this Statute, SASO shall be the authority in charge of matters related to standards, conformity assessment procedures, granting the quality mark, metrology and calibration. All public and private sectors shall adhere to the Saudi standards in all purchases”.**





Whereas the standards of the products included in a regulation shall be a basis for the conformity of such products with the essential safety requirements included in the specified regulation. Therefore, SASO has developed this Technical Regulation.

Note: This preamble and all the annexes of this regulation shall form an integral part thereof.

A handwritten signature in blue ink, appearing to be 'to' or 'to'.

Article (1) Terms and definitions

1/1 Terms and expressions below and other expressions mentioned in this Regulation, when applying its provisions, have the indications and meanings shown before them, or mentioned in the laws, regulations and decisions in force in SASO, unless the context requires otherwise.

KSA: The Kingdom of Saudi Arabia.

The Board: SASO's Board of Directors.

SASO: Saudi Standards, Metrology and Quality Organization.

Regulatory Authorities: Government authorities with regulatory tasks according to their jurisdiction, responsible for implementing or following up the implementation of technical regulations, whether at customs ports, markets, or factories.

Market Surveillance Authorities: Government authorities competent to monitor markets and measures taken to ensure that products comply with the requirements of the regulations issued by the Board of Directors.

Technical Regulation: A board-approved document establishing the characteristics of products, associated processes, and methods of production, including applicable administrative provisions, to be adhered to. It may include or pay attention to terms, definitions, packaging, and requirements of markings or labelling products, services, processes or production methods.

Product: Escalators and moving walkways.

Standard: A document specifying the characteristics of commodity, material, service, or anything that is subject to measurement. The standard also offers descriptions, characteristics, level of quality, dimensions, measurements, safety requirements; It also include terms, symbols, testing methods, sampling, packaging, data cards and markings.

Essential Requirements: Product requirements, which may affect safety, health, and the environment, to be adhered to.

Hazards: A potential source of harm.

Risks: A potential risk causing damage; associated with the severity of damage.

Market Surveillance: Activities and measures carried out by the market surveillance authorities to verify that products meet the requirements stipulated in the relevant technical regulations, and that they do not pose a risk to health, safety, environment, or any other aspect related to the protection of the public interest.

Supplier: 



- The product manufacturer, if he or she resides in the Kingdom, or everyone who presents his or her identity as a product maker by introducing the product by his name or any relevant business description, as well as everyone who renews the product.
- The manufacturer's agent in the Kingdom in the event of the manufacturer's residence outside the Kingdom, or the importer in the absence of an agent for the manufacturer in the Kingdom.
- Everyone in the supply chain whose activity may have an impact on the characteristics of the product.

Conformity Assessment Procedures: A board-approved document explaining the procedure used directly or indirectly for the conformity assessment.

Notified Bodies: Conformity assessment bodies approved by SASO in accordance with the Regulation of Conformity Assessment Bodies Acceptance.

Inspection Bodies: Conformity assessment bodies accredited according to ISO 17020, and approved by the SASO in accordance with the Regulation of Conformity Bodies Acceptance, to carry out inspection procedures of escalators and moving walkways, before placing them under public use, or during periodic testing procedures, and issuing the inspection certificate as per the requirements specified in this Technical Regulation.


Certificate of Conformity: A certificate issued by SASO or one of the notified bodies, which confirms that the product or any batch thereof, conforms to the requirements of relevant standards.

Inspection Certificate: A certificate issued by the notified inspection body, which confirms that, the product, facilities, factories, equipment, operations or services meet the requirements of a specific technical regulation or standards.

Supplier Declaration of Conformity: A declaration by the supplier by which it declares that its product complies with the requirements of applicable legislations, without the mandatory intervention of a third party, at all stages of the manufacturing process, and the declaration may depend on tests on the product in accordance with the relevant legislation.

Saudi Quality Mark: A mark approved by SASO indicating that the facility has an effective management system that ensures the production of a commodity that conforms to the regulations, granting procedures, and relevant Saudi standards.

Placing on Market: Launching the product for the first time in the Saudi market for which the manufacturer or supplier is responsible.

Supply in the Market: Any supply of the product for distribution, consumption or use in KSA, in the framework of a commercial activity, in return for payment or free of charge. 



Withdrawal: Any procedure that aims to prevent placing product in the market or in a supply chain.

Recall: Any action aimed at retrieving the offered products that were previously made available to the end user.

Operating Entity: The owner of the escalator or moving walkway, responsible for the installations, constructions and associated procedures.

Maintenance Entity: Any individual company or institution licensed to carry out the maintenance activity of escalators and moving walkways, and qualified to do so in accordance with the requirement issued by the competent authority in this regard.

Escalators: Power-driven, inclined, continuous moving stairways used for raising or lowering persons in which the user-carrying surface remains horizontal.

Moving Walkways: A powered mechanical installation, used for the conveyance of persons in which the conveyor surface carrying the user remains parallel to the direction of movement and is uninterrupted.

Balustrade: Part of the escalators and moving walkways that ensure the safety of users by providing stability and protection from moving parts.

Electrical Safety Systems: Safety related parts of the electrical control system as an arrangement of safety circuits and monitoring devices.

Electrical Safety Devices: Parts of safety circuits consisting of safety switches and/or fail safe circuits.

Emergency Keys: Keys used to instantly stop escalators and moving walkways in cases of emergency.

- 1/2 Other terms and expressions contained in this Technical Regulation shall have the meanings contained in the applicable laws, regulations, and decrees of the Kingdom.





Article (2) Scope

This Technical Regulation shall apply to escalators, moving walkways, and their accessories.

Article (3) Objectives

This Technical Regulation aims to lay out the essential requirements of escalators, moving walkways, and their accessories, included in the scope of this Technical Regulation, and to identify the conformity assessment procedures with which suppliers shall comply, in order to ensure the conformity of such products to the essential requirements that aim to preserve the environment, and the health and safety of the consumer, and facilitate the market surveillance procedures.

Article (4) Obligations of Supplier

The supplier shall adhere to the following requirements:

4/1 Technical Requirements

The supplier shall fulfil the technical requirements for escalators and moving walkways, as follows:

4/1/1 Escalators and moving walkways shall fulfil the technical requirements contained in the standards set out in Annex No. (1).

4/1/2 Commitment to carry out the required conformity assessment.

4/1/3 Ensure that all systems in escalators and moving walkways, including safety systems, meet the technical requirements set out in the standard, including:

- A) Mechanical parts and their components, including belts, structures and containers.
- B) Safety systems and their components, including electrical systems.
- C) Control systems, including protection systems against mechanical and electrical failures.
- D) Sensor and alarm systems.
- E) Emergency stop systems.
- F) Braking systems.
- G) External surfaces are free of parts and materials that may pose a risk to the user.
- H) Dimensions, sizes and locations of escalators and moving walkways.
- I) Handrails and access areas.



4/1/4 When the requirements of this technical regulation and standard cannot be met, with some risks that cannot be avoided, the level of risk must be reduced as much as possible, while taking appropriate actions such as guidelines, instructions and training.

4/2 Safety Requirements and/or Protective Measures

4/2/1 Design and Manufacturing Requirements

Escalators and moving walkways shall be designed and manufactured to prevent and reduce risks as much as possible by analyzing the risks that may arise from escalators and moving walkways and taking the necessary measures to eliminate or minimize them as much as possible.

4/2/2 Support Structure and Enclosure Requirements

- A) All mechanically moving part of the escalator and moving walkways shall be completely enclosed within panels or walls, exempt from this are steps, pallets, and belts that can be accessed for use.
- B) Exterior panels shall withstand the limits stipulated in the relevant standard, without any breakage or deflection resulting in any gap.
- C) It shall be possible to clean the inner parts of escalators and moving walkways to prevent the accumulation of materials (such as grease, oils, dust and paper), which pose a risk of fire.
- D) Exterior panels designed to be opened (e.g. For cleaning purposes) shall be provided with an electric safety device.
- E) Areas designated for operation and maintenance shall be available only to authorized persons.
- F) The supporting structure shall be designed to withstand the weight of escalators and moving walkways, as well as the estimated load for use.

4/2/3 Steps, Pallets and Belts

- A) The parts used in the user's carrying area shall be horizontal in the direction of motion.
- B) Safe footholds shall be provided in escalators and moving walkways.
- C) The dimensional requirements stipulated in the relevant standards shall be adhered to.
- D) The surfaces of the steps and pallets shall have grooves in the direction of movement with which the teeth of the combs mesh.
- E) Sharpness of edges and corners of the steps, pallets and belts between the stepping tread surface and the winch shall be reduced.
- F) Belts shall be fastened to provide continuous and uninterrupted footholds.



- G) Materials shall retain their strength characteristics during their specified life cycle taking into account the environmental conditions such as temperature, UV radiation, humidity and corrosion.
- H) Steps, pallets and belts shall be designed to withstand all possible loading and distortion effects that may be generated during operation.
- I) Escalators and moving walkways shall be designed such that all component parts are securely attached, and do not become loose during their life cycle, and withstand the reaction force of the electric safety device.

4/2/4 Drive Unit

- A) A drive unit shall not operate more than one escalator or moving walkway.
- B) Stopping the escalators and moving walkways shall be by means of electrical safety devices.
- C) Speeds for escalators and moving walkways shall not exceed the limits stipulated in the relevant standards.
- D) Escalators and moving walkways shall have a braking system by means of which they can be brought to rest with a uniform deceleration and maintained stationary (operational braking).
- E) There shall be no intentional delay in the braking system.
- F) A device shall be provided to monitor the braking system after starting the escalator and moving walkway.
- G) The braking system shall operate automatically in the following cases:
 - In the event of loss of power supply.
 - In the event of loss of the voltage supply to the control circuits.
- H) Brakes that can be released by hand shall require continuous application of manual pressure to keep them open.
- I) Auxiliary/additional brakes shall be of the mechanical (friction) type, if escalators and moving walkways are equipped with it.

4/2/5 Balustrade

- A) Balustrades shall be installed on each side of the escalators and moving walkways.
- B) Appropriate measures shall be taken to prevent persons from climbing on the outsides of the balustrade if there is a danger of people falling from them.
- C) Devices to restrict access shall be provided where escalators and moving walkways are located adjacent to walls.



- D) All exposed fastener heads for the devices shall be of the vandal resistant type.
- E) The parts of the balustrade facing the steps, pallets or belts shall be smooth; covers shall be rigid and have rounded or bevelled shapes.
- F) Cover joints in the direction of travel shall be arranged and formed in such a manner as to eliminate any risk of harm caused by trapping.
- G) If glass is used for the interior panel, it shall be toughened glass in accordance with the limits stipulated in the relevant standard, whether single or multi-layer glass.
- H) The possibility of trapping between skirting and steps of escalators shall be minimized, and the skirting shall be sufficiently rigid.
- I) Use of suitable materials/types for linings.

4/2/6 Combs

- A) Combs shall be fitted at both ends to facilitate the transition of users, and shall be easily replaceable.
- B) The ends of the combs shall be rounded off and so shaped as to minimize the risk of trapping between combs and steps, pallets or belt.
- C) Combs or their supporting structure shall be adjustable, to ensure correct meshing.
- D) Combs shall have such a design that upon trapping of foreign bodies either their teeth deflect and remain in mesh with the grooves, or they break.

4/2/7 Machinery Spaces and Driving Stations

- A) These rooms/spaces shall be used only for accommodating the equipment necessary for the operation and maintenance and inspection of the escalators and moving walkways.
- B) Fire alarm systems and control systems are permitted provided they are sufficiently protected against incidental damage, and do not generate additional risks for maintenance operation.
- C) Effective protection for moving parts shall be provided if they are easily accessible, especially:
 - Keys and screws.
 - Chains and belts.
 - Gears, gear wheels and sprockets.
 - Speed regulator.
 - Wheels and braking systems.

4/2/8 Electrical Appliances



- A) Electrical installations for escalator and moving walkways shall be designed and manufactured to ensure protection against hazards arising from electrical equipment or which may be caused by external influences, provided that the equipment is used in the applications for which it was manufactured and adequately maintained.
- B) Electrical safety devices shall prevent the driving unit from starting in hazardous situations or stopping it immediately.
- C) There shall be a main switch, in nearby areas, stations, or near the control devices, capable of breaking the supply to the motor, the brake releasing device, and to the control circuit in the conductors.
- D) Main switches shall be capable of interrupting the highest current involved in normal operating conditions of the escalators or moving walkways.
- E) Connectors and devices which are safety related and which can be extracted without the use of a tool shall be designed in such a way that it is impossible to re-insert them incorrectly.
- F) Connection terminals, an accidental interconnection of which could lead to dangerous situations, shall be separated.
- G) The components actuating the electric safety devices shall be selected and assembled so that they are able to function properly even under the mechanical stresses resulting from its continuous operation.

4/2/9 Controls

- A) Starting of escalators and moving walkways shall be effected by one or more switches available to authorized persons, and be reachable from an area outside the comb intersection line
- B) Visibility shall be clear to persons operating escalators and moving walkways, or shall have means of ensuring that there are no people in the areas of use before the start and stop operations are carried out.
- C) The operator shall have means of ensuring that escalators or moving walkways are not being used, to carry out stopping operations.
- D) Stop switches shall be provided for escalators or moving walkways in the event of an emergency, and shall be placed in conspicuous and easily reachable positions.

4/2/10 Documents and Instructions

- A) All escalators are required to be provided with documentation that include an instruction handbook relating to use, maintenance, inspection, periodic checks and rescue operations.





- B) Instructions for use shall include additional provisions for transport, assembly and installation, use (setting, programming, operation, cleaning, fault finding and maintenance).
- C) Safety related signs shall be fixed in the vicinity of the entrances of escalators and moving walkways, including:
 - Signs of holding children.
 - Carrying pets.
 - Use of handrails.
 - Prohibition of entry for push chairs.
 - Signs preventing unauthorized persons from using escalators and moving walkways during maintenance, repair or inspection operations.
 - Guiding signs in cases of emergencies.

4/2/11 Inspection Requirements

- A) Escalators and moving walkways shall be inspected before being put into service, after major modifications, and at regular intervals.
- B) Inspection shall be made by competent and qualified persons to carry out inspection operations.
- C) Repeated inspections and periodic tests shall not cause any damage to escalators, moving walkways, or their safety components.
- D) A constructional inspection or examination includes:
 - Overall visual inspection.
 - Functional test.
 - Test of electric safety devices with regard to their effective operation.
 - Brake test.
 - Measurement of the insulation resistance of electrical circuits.

A major (main) modification includes a change of the location, of the speed, of the electrical safety devices, of the braking system, of the drive system, of the control units or trusses and balustrades and inspections shall be carried out as stipulated in this Technical Regulation and relevant standards.

4/3 Metrological Requirements

International system of units (SI Units), multiples or parts thereof shall be used for escalators and moving walkways, during design, manufacturing or trading, in accordance with the Saudi Measurement and Calibration System.

4/4 Packaging Requirements



- 4/4/1 Ensure that the components of escalators and moving walkways are assembled and arranged safely and properly during storage and transport operations, in accordance with the packing requirements set out in the relevant standard.
- 4/4/2 Ensure that the packaging materials for escalators and moving walkways are free of lead or any heavy metals.

Article (5) Obligations of Operating Entity

- 5/1 The operating entity shall comply with the requirements of this Technical Regulation and meet the requirements issued by the relevant authorities.
- 5/2 The competent authorities shall be informed of the escalators and moving walkways that have been completed and equipped for public use, so that they can be subjected to inspections before being put into service.
- 5/3 Periodic inspections of escalators and moving walkways shall be carried out, and cooperation with the competent authorities and inspection bodies to carry out all necessary inspections.
- 5/4 Periodic maintenance shall be carried out on escalators and moving walkways.
- 5/5 On-site safety instructions shall be followed, daily check-ups shall be carried out and safe operation shall be ensured.
- 5/6 The competent authorities shall be informed of escalators and moving walkways that may pose a danger when used, and the corrective measure that have been taken to ensure the safety of users.
- 5/7 Any other requirements specified by the competent authorities.

Article (6) Obligations of Maintenance Entity

- 6/1 Maintenance operations shall be carried out and all records and documents relating to these operations shall be kept.
- 6/2 Any major maintenance (modification) shall be reported to the operating entity and the competent authorities for re-inspection.
- 6/3 Maintenance personnel shall be qualified, and be aware of the necessary procedures and precautions to avoid the risks arising from maintenance operations.
- 6/4 All measures shall be taken to ensure that people are protected from any risks during maintenance operations.
- 6/5 Any other requirements specified by the competent authorities shall be adhered to.





Article (7) Obligations of Inspection Body

- 7/1 The inspection body shall be accepted by SASO in accordance with the Regulations of Acceptance of Conformity Assessment Bodies.
- 7/2 An inspection report on the validity of escalators and moving walkways shall be submitted to the competent authorities before being put into service, with the results of all tests carried out by the inspection body after installation.
- 7/3 Periodic inspections of escalators and moving walkways shall be carried out and the results of operations shall be submitted to the competent authorities.
- 7/4 The inspection body shall cooperate with the owner of the facility and the competent authorities to carry out the inspection operations.
- 7/5 Proof of inspections on escalators and moving walkways shall be fixed in a clear and readable location, with the date of inspection and the next inspection date indicated.

Article (8) Labelling

The labelling for escalators and moving walkways, intended for placement and display on the market, shall fulfill the following:

- 8/1 Labels of the product shall conform to the technical requirements contained in this Technical Regulation and the relevant standards set out in Annex (1).
- 8/2 Labels shall include information, warnings, and operation guidelines, and shall be in a clear script and in a way that is difficult to remove.
- 8/3 The data shall be written in Arabic and may be written in another language in addition to the Arabic, and what have been written in Arabic should prevail.
- 8/4 Images and phrases used on the product packaging shall not violate the public order, public morals and Islamic values prevailing in the KSA.

Article (9) Conformity Assessment Procedures

- 9/1 The supplier - responsible for placement of escalators and moving walkways on the market – shall obtain a certificate of conformity issued by a notified body, in accordance with the conformity assessment form (Type 1a) as per standard ISO/IEC 17067 as described in Annex (2).
- 9/2 An inspection certificate shall be obtained from a notified body accepted by SASO after the installation of escalators and moving walkways and before they are put into service.



- 9/3 Periodic inspections of escalators and moving walkways shall be carried out at least once a year to ensure their safety and the safety of their components when used, including transportation, maintenance and modification operations.
- 9/4 The notified body shall carry out the conformity assessment procedures according to the specified form, in order to ensure fulfillment of the requirements of this regulation and the relevant Saudi Standards set out in Annex (1).
- 9/5 The product shall be accompanied by a technical file that includes the following:
- A) Supplier (Manufacturer/Importer) Declaration of Conformity in accordance with the form attached in Annex (3).
 - B) Risk assessment document.
- 9/6 The supplier shall cooperate with the Regulatory Authorities and Market Surveillance Authorities by providing the technical file documents, certificates of conformity, and any other documented information proving the conformity of the product to the requirements of this Technical Regulation, upon request.
- 9/7 Escalators, moving walkways, and their accessories that have obtained the Saudi Quality Mark or its equivalent shall be deemed as met the requirements stipulated in this Technical Regulation.

Article (10) Responsibilities of Regulatory Authorities

Regulatory Authorities, as a part of their competence and powers, shall:

- 10/1 Verify that escalators and moving walkways fulfill the specified conformity assessment procedures, and the technical documents attached to the consignments.
- 10/2 Regulatory Authorities are entitled to withdraw samples of escalators and moving walkways randomly, and to refer them to the competent laboratories to ensure that they comply with the requirements of this Technical Regulation.
- 10/3 Regulatory Authorities have the right to charge suppliers (manufacturers and importers) the costs of conducting tests and associated fees.
- 10/4 In case of a product non-conformity, Regulatory Authorities shall withdraw such products from warehouses, and take the necessary legal measures.

Article (11) Responsibilities of Market Surveillance Authorities

Market Surveillance Authorities, as a part of their competence and powers, shall:

- 11/1 Apply market surveillance procedures to the products displayed in the markets, and the products stored in the warehouses of traders and manufacturers, in order to verify the safety of the products and the extent of fulfillment of the requirements set out in this Technical Regulation and the relevant standards.



- 11/2 Withdraw samples of the product, whether from the market or the warehouses of suppliers (manufacturers and importers), in order to conduct the necessary tests and to ensure the conformity of such products to the requirements stipulated in this Technical Regulation.
- 11/3 In case of non-conformity of a product – displayed and stored – to the requirements of this Technical Regulation, Market Surveillance Authorities shall take all administrative measures including withdrawal and recall of such products, and the procedures and penalties contained in Article (12) shall be applied after taking the necessary measures.

Article (12) Violations and Penalties

- 12/1 It is prohibited to manufacture, import, place or display in the markets, or even advertise products that do not comply with the provisions of this Technical Regulation.
- 12/2 Failure of the product to meet the requirements of this technical regulation is sufficient reason for market survey authorities and regulators to rule that this product is not identical, which may pose a threat to consumer health and safety and the environment, in the following cases:
- A) Non-fixation or improper fixation of conformity labels, Saudi Quality Mark, or its equivalent.
 - B) Failure to issue or improper issuance of the Certificate of Conformity or the Supplier Declaration of Conformity.
 - C) Unavailability or incompleteness of the technical documentation.
 - D) Unavailability or incompleteness of product data/labels or the usage guidelines.
- 12/3 In case of a violation of the provisions of this Technical Regulation, Market Surveillance Authorities – as the case may be - shall take all necessary actions to eliminate such violations, and their effects from the market. To this end, Market Surveillance Authorities may:
- A) Mandate the violating party – responsible for placing and displaying the violating product – to withdraw the product from the warehouses or markets in order to rectify such violations, if possible, export it, or destroy it (depending on the nature of the product) within the period specified by the Market Surveillance Authorities.
 - B) Withdraw, seize or destroy products, or take any further action to summon them from the markets. Market Surveillance Authorities have the right to announce the recall of the product from the market, with all the costs involved being borne by the violator.



- 12/4 When a violation is detected, SASO shall take the necessary measures against such products that violate the requirements of this Technical Regulation, including the cancellation of the relevant certificate of conformity, while taking the necessary measures with the notified body that issued the certificate, in accordance with the Regulation of Conformity Assessment Bodies Acceptance.
- 12/5 Without violating any more severe penalty in the applicable regulations, anyone who violates the requirements of the approved standards for the products covered by this Technical Regulation shall be subject to the penalties provided for in the anti-commercial fraud system.

Article (13) General Provisions

- 13/1 The supplier shall be fully liable for the implementation of the requirements of this Technical Regulation, and shall be subject to the penalties provided for by the anti-commercial fraud system and/or any related regulations, where it is found to be in violation of any of the articles of this Technical Regulation.
- 13/2 This Technical Regulation shall not prevent the supplier from complying with all other laws/regulations in force in the Kingdom relating to the trading, transport and storage of the product, as well as regulations related to the environment, security and safety.
- 13/3 All suppliers of escalators and moving walkways, subject to the provisions of this Technical Regulation, shall provide inspectors of Regulatory Authorities and Market Surveillance Authorities all the facilities and information they request to carry out their tasks.
- 13/4 If any situation arises that cannot be addressed under the provisions of this Technical Regulation, or any disagreement arises in its application, the matter shall be submitted to a competent committee of SASO to issue the appropriate decision on this case or dispute, while taking the public interest into consideration.
- 13/5 The supplier may submit a new application after the reasons for the rejection of the application have been removed, after making the necessary corrections to the reasons that led to the refusal, and paying any additional costs specified by SASO.
- 13/6 SASO examine the complaints it receives about products that have a certificate of conformity or quality mark, validates them, and takes regular action in the event of any irregularities.
- 13/7 SASO has the right to revoke the certificate of conformity if the supplier violates the terms of this Technical Regulation, or to revoke the license to use the quality mark in accordance with the General Technical Regulation for Saudi Quality Mark, and to take legal actions to ensure the preservation of the rights of SASO.



- 13/8 Upon any modifications to the product during the validity period of the certificate of conformity or the Quality Mark license (except for formal modifications), the certificate or license for such product shall be annulled, and a new request shall be submitted.
- 13/9 Only SASO has the right to interpret the articles of this Technical Regulation, and all beneficiaries of the application of this Technical Regulation shall adhere to the interpretations issued by SASO.

Article (14) Transitional Provisions

- 14/1 The provisions of this regulation apply within no more than 180 days from the date of publication in the Official Gazette.
- 14/2 Taking into account the provisions of paragraph (1) of this article, suppliers are given time to correct their situation in the market, in accordance with the requirements of this Technical Regulation within no more than 365 days from the date of publication in the Official Gazette.
- 14/3 This Technical Regulation – once adopted – eliminates all previous regulations in the field of this Technical Regulation.

Article (15) Publication

This Technical Regulation shall be published in the Official Gazette.



Annex (1)

A) List of Relevant Standards

No.	The title of the standard in Arabic	The title of the standard in English	Standard No.
1	والمشايات المتحركة السلالم سلامة الإنشاء: 1 الجزء - المتحركة	Safety of escalators and moving walks – Part 1: Construction	SASO-EN 115-1
2	سلامة السلالم المتحركة والمشايات المتحركة - الجزء ٢: القواعد المتعلقة بتحسين السلامة للسلالم المتحركة والناقلة للمشاة	Safety of escalators and moving walks – Part 2: Rules for the improvement of safety of existing escalators and moving walks	SASO-EN 115-2
3	المصاعد والسلالم المتحركة والممشى المتحرك -- طريقة تقييم وخفض الخطورة	Lifts (elevators), escalators and moving walks - Risk assessment and reduction methodology	SASO-ISO 14798
4	السلالم المتحركة -- أبعاد المبنى	Escalators — Building dimensions	SASO-ISO 9589
5	المصاعد، السلالم المتحركة و السيور المتحركة الناقلة للركاب -- مقارنة للمعايير العالمية في التدخل والتوافق الكهرومغناطيسي	Lifts, escalators and passenger conveyors -- Comparison of worldwide standards on electromagnetic interference/electromagnetic compatibility	SASO ISO/TR 16764
6	متطلبات السلامة للسلالم والمشايات المتحركة – الجزء ١: المتطلبات العالمية الأساسية للسلامة	Safety requirements for escalators and moving walks – Part 1: Global essential safety requirements (GESR)	SASO-ISO 25740-1
7	طاقة الأداء في المصاعد والسلالم والمشايات المتحركة – الجزء ١: قياس الطاقة والتحقق منها	Energy performance of lifts, escalators and moving walks - Part 1: Energy measurement and verification	SASO-ISO 25745-1
8	التوافق الكهرومغناطيسي -- المقاييس العائلية للمصاعد والسلالم المتحركة والممشى المتحرك -- الانبعاثات	Electromagnetic compatibility - Product family standard for lifts, escalators and moving walks - Emission	SASO-ISO 22199



9	التوافق الكهرومغناطيسي -- المقاييس العائلية للمصاعد والسلالم المتحركة والممشى المتحرك -- الحصانة	Electromagnetic compatibility - Product family standard for lifts, escalators and moving walks - Immunity	SASO-ISO 22200
10	صيانة المصاعد والسلالم المتحركة -- القواعد لإرشادات الصيانة	Maintenance for lifts and escalators - Rules for maintenance instructions	SASO EN 13015
11	سلامة الآلات -- وظيفة التوقف أثناء الطوارئ -- مبادئ للتصميم	Safety of machinery-- Emergency stop function-- Principles for design	SASO-ISO 13850

Note: The list of standards mentioned in this Annex is subject to review, and suppliers are responsible for verifying through SASO's portal that they are using the latest standards.

و



B) List of Products and Customs Coding

No.	Product	Customs Coding
1	Other lifting, handling, loading or unloading machinery, lifts, escalators and conveyor belts	8428
2	Parts intended exclusively or mainly for use with machines and devices included in heading 8428	8431

Note: The products and customs coding found in the Sabre electronic platform are the updated and approved version.

to



Annex (2)

Conformity Assessment Form (Type 1a) as per ISO/IEC 17067 (Type Approval)

1/1 Type Approval

Type approval is defined as one of the conformity assessment procedures, under which a notified body reviews and verifies the technical design of the product and declares that the technical design meets the requirements of the relevant Saudi Technical Regulations.

Type approval may be conducted by one of the two following methods:

- A) Examination of a representative sample of the entire product, that represent the expected production (production model).
- B) Assessment of the conformity of the technical design of the product by auditing the relevant technical documentation and manuals (design model), and examining of a representative sample of the expected production for one part or more involving hazardous parts of the product (a combination of the production model and the design model).

2/1 Procedures of Type Approval

2/1/1 Submission of a Type Approval Request to a Notified Body

The manufacturer shall submit a request for type approval to a notified body selected by the manufacturer, such request shall include:

- A) Name and address of the manufacturer;
- B) A written declaration not to submit the same request to any other Notified Body.
- C) Technical documentation facilitating the assessment of the conformity of the product to the requirements of Saudi technical regulations. Such documentation shall include adequate analysis and evaluation of risks.
- D) Technical documentation shall identify the requirements that apply to the product. Including, as required by the assessment, the design of the product, manufacturing and operation (use) of the product.
- E) Technical documentation shall include – at least - the following:
 - 1) A general description of the product.
 - 2) Design and manufacturing drawings, horizontal projections (diagrams), components, units, subdivisions, etc.
 - 3) Description and explanations, referred to therein, necessary to understand the drawings, diagrams, and the operation (use) of the product.




- 4) A list of the Saudi standards or any other relevant technical specifications adopted by SASO, whether fully or partially applied, and a description of the adopted solutions to meet the essential requirements of the Saudi technical regulations in case of non-application of the aforementioned standards. In case of partial application of Saudi standards, the technical documentation shall clarify the applied clauses.
- 5) Report results (graph calculations) of the design, operation control, conducted tests, etc.
- 6) Test reports.
- 7) Representative samples of the planned production. The notified body may request additional samples, if necessary.
- 8) Evidences (proofs) supporting the appropriateness of the technical solutions applied in the design. Such evidence shall refer to all documents, particularly in case of non-application of the Saudi standards and/or the aforementioned appropriate technical specification. Supporting evidences – as applicable - shall include results of test conducted in the suitable laboratory in the manufacturer or any other laboratory under the responsibility of manufacturer.

2/1/2 Tasks of the Notified Body

A) With regard to the product, the notified body shall:

Study the technical documentation and supporting evidence for the purpose of assessment of the technical design of the product.

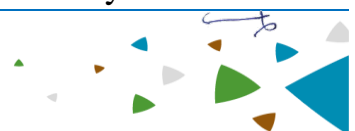
B) With regard to the samples, the notified body shall:

- 1) Ensure that the manufacturing of samples is conformant to the technical documentation, in addition to identifying the elements designed in accordance with the Saudi standards, and the elements designed in accordance with other standards.
- 2) Carry out appropriate examinations and tests, or outsource them in order to verify that the technical solutions adopted by the manufacturer meet the essential requirements specified in the standards, in case of non-application of the relevant standards.
- 3) Carry out appropriate tests or outsource them, in order to verify that – in case of non-application of Saudi standards and/or other appropriate standards - the technical solutions adopted by the manufacturer meet the essential requirements of the Saudi technical regulations.
- 4) Be in agreement with the manufacturer on the venue where tests should be conducted. 



C) As for decisions made by the Notified Body:

- 1) The notified body shall issue an assessment report of the procedures carried out and their outputs. The notified body shall not publish, fully or partially, the report without the approval of the manufacturer.
- 2) In case the type meets the requirements of the Saudi technical regulations relevant to the concerned product, the Notified Body shall issue a Type Approval Certificate for the manufacturer. Such certificate shall include the name and address of the manufacturer, test results, the validity conditions thereof, if any, and all information required for identification of the certified type. The certificate may also include attachments.
- 3) The certificate, along with its attachments, shall include all necessary information required to assess the conformity of manufactured products, according to the tested type and for monitoring during operation.
- 4) In case the type is non-conforming to the requirements of the Saudi Technical Regulations applicable to the product, the Notified Body shall not issue the Type Approval Certificate and shall notify the applicant of its decision, stating detailed justifications for such decision.
- 5) The Notified Body shall follow all recognized technological developments. Whenever such developments indicate that the possibility that the certified type may no longer comply with the requirements of the Saudi Technical Regulations, the Notified Body shall determine to what extent further tests are required, and it shall inform the manufacturer accordingly.
- 6) The manufacturer shall inform the Notified Body, holding the technical documentation related to the Type Approval Certificate, of all modifications of the certified type, which may affect the conformity of the product to the requirements of the Saudi Technical Regulations, or to the terms of validity of the Type Approval Certificate. As such modifications require additional approval other than the primary Type Approval Certificate.
- 7) Notified bodies shall inform SASO of the Type Approval Certificates and any additions issued or withdrawn, and shall periodically, or upon request, provide a list of the Type Approval Certificates and any additions that has been rejected, suspended, or restricted in any way.
- 8) Each Notified Body shall inform the other accredited Notified Bodies of the Type Approval Certificates and any additions that has been rejected, suspended, or restricted in any way. In addition, they shall be informed, upon request, about Type Approval Certificates or any additions released.
- 9) Upon request, SASO and other Notified Bodies can obtain copies of the Type Approval Certificates and/or additions thereto. SASO may obtain



copies of technical documentation and testing results carried out by the Notified Body, upon request. The Notified Body shall keep a copy of the Type Approval Certificate, its annexes and additions, in addition to the technical documentation (including documents attached by the manufacturer) up until the certificate's expiration date.

- 10) The manufacturer shall keep a copy of the Type Approval Certificate, its annexes and additions thereto, in addition to the technical documentation. Furthermore, the manufacturer shall make all documents available to Regulatory Authorities and Market Surveillance Authorities for ten (10) years after placement of the product in the market.
- 11) The supplier may submit the request mentioned in Clause (2/1/1), and carry out the aforementioned tasks on behalf of the manufacturer, on the condition of the manufacturer's consent.

→



Annex (3)

Supplier Declaration of Conformity

This form shall be filled out on the company's official paper.

1) Supplier Data

- Name: -----
- Address: -----
- Contact Person: -----
- Email: -----
- Phone Number: -----
- Fax: -----

2) Product Details

- Trademark of Product -----
- Model: -----
- Batch or (serial number): -----
- Reference Standards/Technical Specifications: -----
- Notified Body/Notification Number: -----

We hereby declare that the product mentioned herein conforms to the Saudi Technical Regulation (.....) and the Saudi Standards annexed thereto.

Person in Charge: -----

Company Name: -----

Signature: ----- Date: --/--/----

